



**Leicestershire
& Rutland**
Wildlife Trust

Business Partnerships

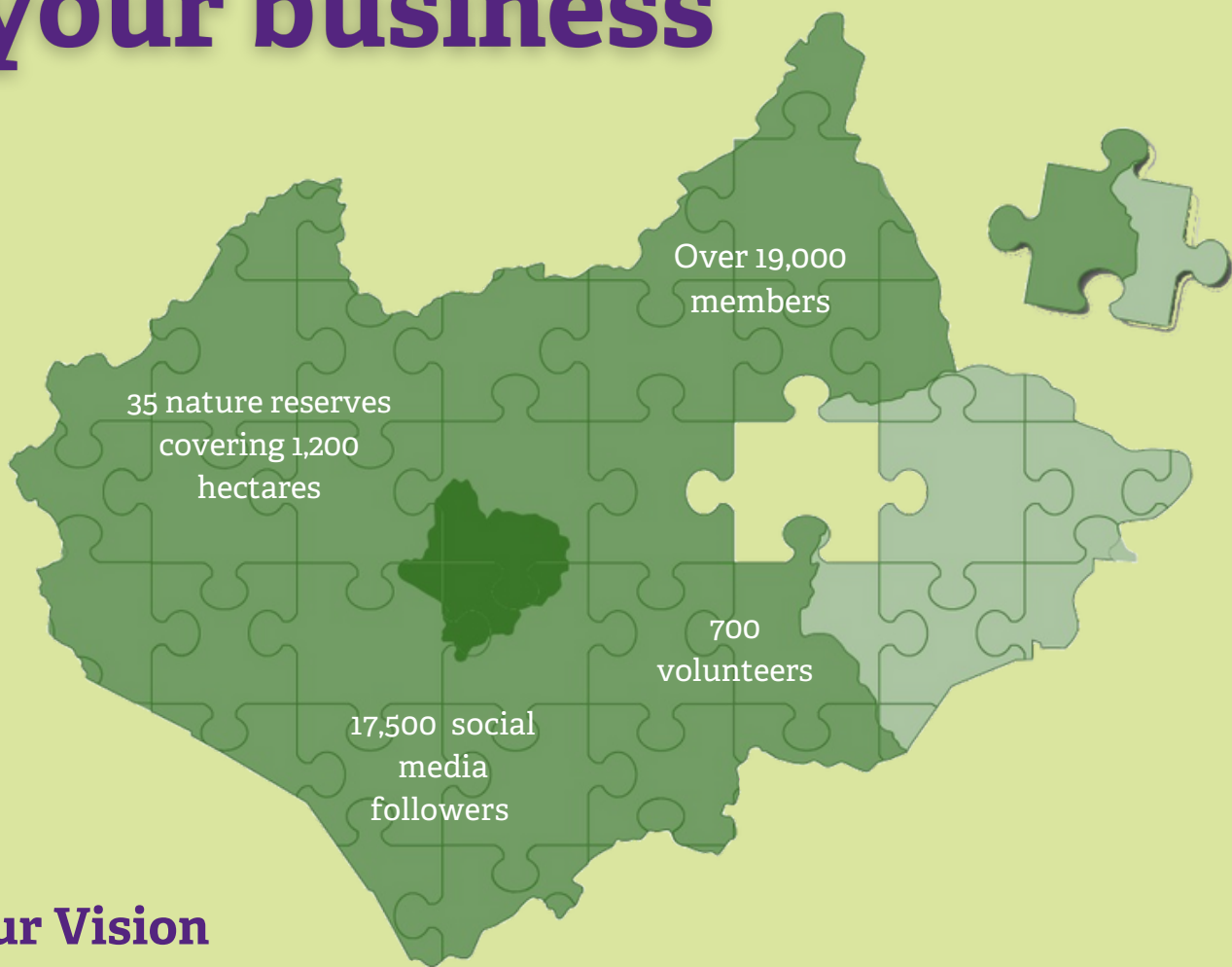


**Together
we can create a wilder future**

www.lrwt.org.uk/corporate

Leicestershire and Rutland Wildlife Trust is a registered charity (no. 210531)
and a company limited by guarantee (no. 561833)

Make wildlife your business



Our Vision

For over 65 years we have been saving wildlife and engaging people with nature. We believe Leicestershire and Rutland should be rich in wildlife for the benefit of everyone - with more wildlife, more wild places and more people having a strong connection to nature.

As individuals, we can make a real contribution. But by putting together our collective knowledge, understanding and passion for wildlife, we can make even more of an incredible impact.

This is why we are always happy to talk with corporate partners who share our passion and commitment to creating a wilder future.



Nature on your doorstep

From woodland to meadows, wetland to heaths, our nature reserves comprise some of the most important wildlife and geological sites in Leicestershire and Rutland.

Maybe you're drawn to the wetlands and ospreys of Rutland, the dramatic scenery of Charnwood Lodge, or the meadows out at Loughborough. And maybe you've already discovered the hidden gems of Bloody Oaks Quarry, Narborough Bog and Wymondham Rough.

Whether you like to escape for some relaxation, discover wildlife in magical places as a family or just take pride in the wild places of Leicestershire and Rutland, you can help to ensure the future of these amazing places by supporting the fantastic work that goes into making sure they are there for everyone to enjoy.



Our focus on helping nature to recover has already achieved great things, from successfully bringing ospreys back to the the Midlands to working with partners to ensure the survival of many local species, from rewilding work to creating living landscapes and linking up wildlife-rich areas.

Investing in our reserves and our nature recovery work will help to give wildlife a home and help everyone across our counties to connect with wildlife on their doorstep.



Empowering Communities through Access to Nature



And there is yet another side to our work.

Access to Nature is recognised as bringing multiple benefits, particularly around physical and mental health. It can also help to bring people together in many ways regardless of their beliefs or background and help to create a more cohesive environment, addressing many issues around disengagement.

We have been running a new and innovative project to test a way to empower communities within Leicester by creating a common ground and goal for those of different backgrounds, using access to nature as a foundation.

We would love to work with more groups and increase access to nature across the counties.



We aim to offer a broad and varied education programme, because we believe that nature should be accessible to all, no matter where they are.

Funding has helped us to provide fun and engaging opportunities for children and families throughout our counties to experience the natural world and discover nature through a range of wild activities



Some of our projects...

Our well-regarded Trainee Reserves Officer programme supports vocational training for young people locally

The UK is one of the most nature-depleted countries. Our nature recovery work looks to tackle this by working with experts to re-introduce species and ensure their survival

We believe that nature education should be accessible to all, and aim to extend our provision to those who need it most

Our engagement work has generated momentum and enthusiasm, working ground up with communities across Leicester

We are looking to refresh our interpretation and signage across all our reserves, reaching thousands of visitor across the two counties

Accessibility on our reserves is so important. We aim to improve and replace many of the walkways at several sites.



Why join us?

Collaboration

Developing ideas and being open with partner organisations has been a key part of all our work, and it is important to collaborate and work together to develop shared goals that work for us all through our shared values.

Let's unite our skills and influence to make a real and lasting difference.



Engagement

Together we can create a real and genuine impact and outreach locally, while engaging your stakeholders and staff by involving them throughout.

Let's generate stories and interest, increasing reach and awareness.



Building Understanding

Partnerships need to be about more than just a 'warm glow', so let's make a real impact instead. We can learn what matters to you, and together we can creatively find new ways of working that make the most of all we both have to offer.

Let's transform the way we work.

Making an impact

By working alongside you we can create so much impact, benefitting your people, your places and your brand

Your People

Motivated and enthusiastic staff are happier and healthier, leading to a more productive and engaged workplace and better retention.

Your Places

Make your company stand out by helping to restore wild places across our two counties and inspiring local people to take action for nature.

Your Brand

Consumer, employee and investor behaviour is increasingly being influenced by environmental concerns. Partnering provides a fantastic opportunity for businesses with sustainable and ethical business models.

You can join so many others in making a huge difference for wildlife in Leicestershire and Rutland. Let us protect, restore and inspire together.





Ways to work together

Charity of the Year

Partnering with us as your chosen Charity of the Year is a brilliant way to unite your employees in support of a cause that makes such an impact locally. We will help you with activity ideas and fundraising advice, and let you know about activities we run



Sponsorship Opportunities

There are many different opportunities for sponsoring our work, from conservation to regeneration to outreach, ensuring you make a real impact here in Leicestershire and Rutland

Matched / Payroll Giving

Payroll giving is an easy way for employees to donate to charity directly from their salary. Matched funding gives your employees the opportunity to boost any fundraising they do

Corporate Partnerships

There are many other ways we can work together, either through volunteering and expertise sharing to align strategic objectives. Simply get in touch to start the conversation





**Leicestershire
& Rutland**
Wildlife Trust

Business Partnerships

**Let's work together to create a
wilder future for
Leicestershire & Rutland**

www.lrwt.org.uk/corporate



**To find out more
information about
becoming one of our
valued business partners
please contact us at**

info@lrwt.org.uk

