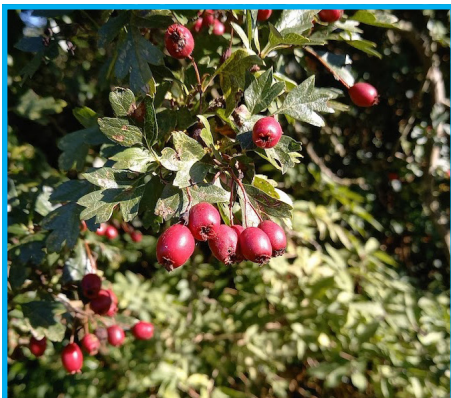


Charnwood Forest Landscape Partnership Scheme

Hedgerow Species Spotter Sheet



Common Hawthorn

Crataegus monogyna

3-lobed leaves, toothed margins, leaves show before white flowers in spring, red berries with 1 seed, thorns on twigs

Date recorded:

Location (grid ref):

Photograph taken?



Blackthorn

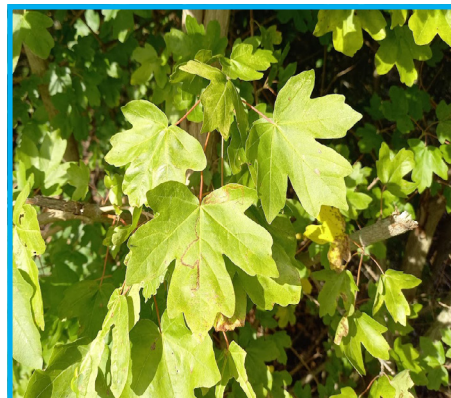
Prunus spinosa

Toothed simple leaves, widest above mid point, white flowers appear before leaves, purple-black sloes, spines at end of side shoots

Date recorded:

Location (grid ref):

Photograph taken?



Field Maple

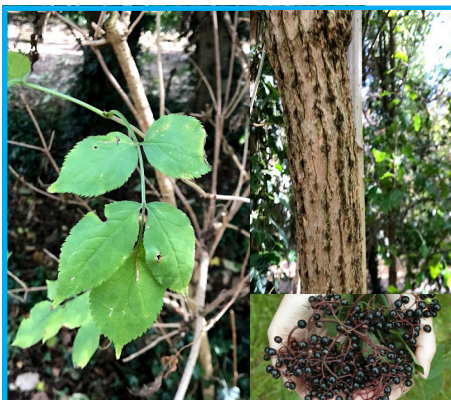
Acer campestre

5-lobed leaves with rounded teeth, brown/red bark when young, corky when older, small opposite buds, keys (fruit) with horizontal wings

Date recorded:

Location (grid ref):

Photograph taken?



Elder

Sambucus nigra

Leaves with 5 or 7 leaflets (opposite pairs), corky pale bark, creamy flowers in early summer, clusters of small black berries on red stems

Date recorded:

Location (grid ref):

Photograph taken?



Hazel

Corylus avellana

Serrated leaves, cordate at base, flattened green oval buds, yellow male catkins, often multi-stemmed after coppicing

Date recorded:

Location (grid ref):

Photograph taken?



Alder

Alnus glutinosa

Dark green rounded leaves with blunt ends, male catkins green (red in winter), female catkins ripen to woody cones, red club-shaped buds

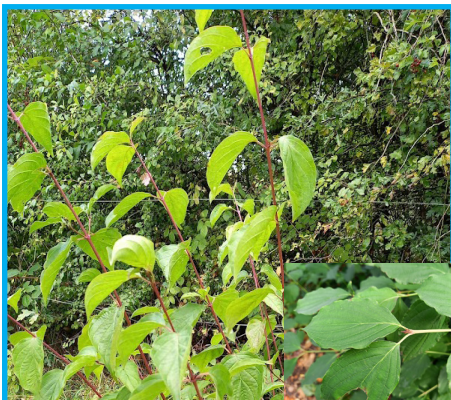
Date recorded:

Location (grid ref):

Photograph taken?

Charnwood Forest Landscape Partnership Scheme

Hedgerow Species Spotter Sheet



Common Dogwood

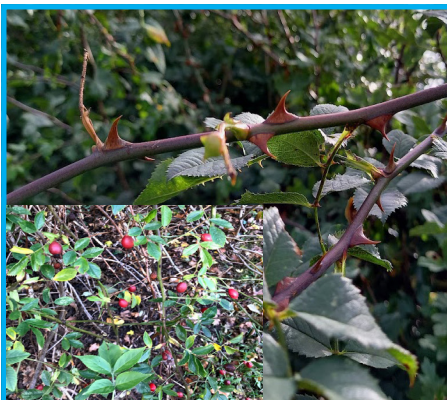
Cornus sanguinea

Oval leaves in opposite pairs with curving veins, new shoots bright red, leaves red-purple in autumn, white flowers then black berries

Date recorded:

Location (grid ref)

Photograph taken?:



Dog Rose

Rosa canina agg

Strongly arching stems to 3m, broad-based hooked prickles, 5-7 toothed leaflets, large white/pale pink flowers, red shiny hips (fruits)

Date recorded:

Location (grid ref)

Photograph taken?:



Guelder Rose

Viburnum opulus

3-lobed leaves, sharply toothed, turning yellow-red in autumn, white umbel-like flower heads, red translucent shiny berries

Date recorded:

Location (grid ref)

Photograph taken?:



Ivy

Hedera helix

Dark green shiny 5-lobed (when young) leaves, dome-shaped clustered pale green/yellow flowers, black globular 'berries'

Date recorded:

Location (grid ref):

Photograph taken?



Honeysuckle

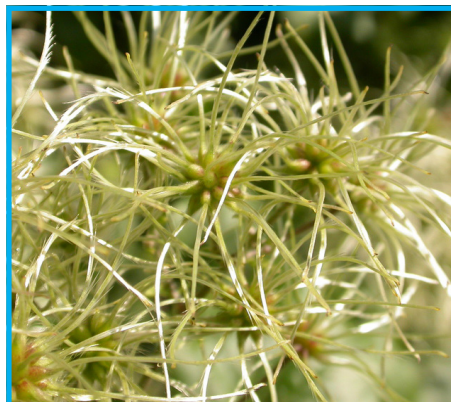
Lonicera periclymenum

Deep green stalkless leaves, cream trumpet-like flowers often with pink tinge, clusters of red berries in autumn

Date recorded:

Location (grid ref):

Photograph taken?



Wild Clematis

Clematis vitalba

Other names include Traveller's Joy and Old Man's Beard, 3-5 elliptical toothed leaflets, seed clusters have feathery appearance

Date recorded:

Location (grid ref):

Photograph taken?