

Creating a **Wildier Future** for Leicestershire and Rutland

Annual Review
2020-2021



**Leicestershire
& Rutland**
Wildlife Trust





Our Annual Review outlines our achievements over the year April 2020 to March 2021, despite the difficulties we have all faced. In the face of COVID-19, we still delivered great work thanks to the diligence of staff and volunteers, together with the continued support of our members, donors and partners.

April saw us adapt to the first national lockdown. We ensured our operations were COVID-secure, curtailing activities as required by changing Government guidance and preparing for worst-case scenario impacts on our income and delivery.

Despite challenges, the year saw huge achievements. These included the delivery of the online Virtual Birdfair, a successful programme of online talks, a bracken control experiment using pigs, the provision of online children's education activities and the essential maintenance and protection of our unique nature reserves. We are grateful for the enormous backing we received. The continued and steady support of our membership shows the value of our work even in difficult times. The successful application and resulting funding from the National Lottery Heritage Fund helped in the face of increased costs and decreased income.

Alongside funding from Government this has contributed to the resulting year finishing stronger than our first predictions, although the financial impacts have still been severe.

There have been significant impacts across all our work. Whether closing Lyndon Visitor Centre, adapting our home and office working, or having to stop volunteer operations, amongst many others, our need to champion and be an advocate for wildlife continues to be as important as ever. For instance, our work on planning applications had to carry on regardless, we have argued against the continued construction of HS2 and we continue to promote vaccination rather than culling of badgers.

Never has the critical role that nature plays in our lives been clearer, nor how much public support there is for our work. As such, we can leave the last year more hopeful and determined for nature's recovery. This report reveals our work in the face of adversity, as we as an organisation and movement develop a new vision and strategy for 2030, creating more space for nature and empowering more people to take action.



**Anthony
Biddle**
Chair of Trustees



**Tim
Graham**
CEO

We're grateful to be supported by **16,385 members**, people across Leicestershire and Rutland who care about wildlife and want to protect it. Around the city of Leicester, through the suburbs and into the countryside, across our **35 nature reserves** covering **1,250 hectares**, our **six Living Landscapes** and beyond, in towns, wetlands, woodlands, meadows and heaths, we are supported by **35 staff** and over **700 volunteers**, all working together for nature. **Seven Local Groups** offer guided walks, lectures and talks, fundraise for us and inspire local people to take action for wildlife.

Our Mission

To protect and enhance the wildlife and wild places of Leicestershire and Rutland and to engage people with nature.

Our Vision

A Living Landscape, rich in wildlife, valued and enjoyed by all.

Our work

The Trust works to safeguard wildlife by:

Protecting precious places



Inspiring and educating



Speaking out and campaigning

Encouraging people to enjoy nature



Researching and surveying



We are one of **46** Wildlife Trusts across the UK who are standing up for wildlife locally.

Together we have over **800,000** members, manage more than **2,300** nature reserves, run thousands of projects and events, and combine to ensure that local and national policies work for wildlife and wild places.



It's all thanks to you...



Leicestershire and Rutland Wildlife Trust is the leading wildlife conservation charity working to protect and enhance the wildlife and wild places of Leicestershire and Rutland.

Over the last six decades, we have been standing up for wild places, saving endangered species and bringing people closer to nature. We believe Leicestershire and Rutland should be rich in wildlife for the benefit of everyone. Your support makes that possible. Whether you are a member, make a donation, leave us a legacy or join one of our campaigns, your contribution makes a real difference for your local wildlife.



Leave a gift in your Will

Including a gift in your Will to Leicestershire and Rutland Wildlife Trust helps us protect the threatened species and fragile places we all love. A charity legacy can give you peace of mind that your assets are being used for the causes you care about, like preserving our environment for future generations. Do you remember hearing cuckoos and turtle doves when you were a child, or bumping into a hedgehog snuffling in your garden? Your legacy could be giving your own grandchildren, and the next generation, these same experiences once more.

Find out more about leaving a gift in your Will on our website **lrwt.org.uk/legacy** or contact **Harriet Hickin 0116 262 9968 hhickin@lrwt.org.uk**
Thank you.



Gifts in Wills and In Memoriam

We are especially grateful to those who remember LRWT in their Wills, and particularly in the last year the late **John Mead, Joan Hems, Valerie Gates, Annie Walker and Sarah Stirling.**

We are also grateful to friends and family who leave donations in memory of loved ones. Legacies and In Memoriam donations make a tremendous difference to the conservation work we can achieve.

Protecting wildlife during COVID-19

This reporting period almost exactly coincided with the beginning of Government restrictions arising from the COVID-19 pandemic, beginning with the first lockdown at the end of March 2020. Two further national lockdowns ensued, with the city of Leicester and some suburbs entering their own local lockdowns, too. This significantly impacted our normal operations and even with swift and successful adaptations, the impact of the virus on LRWT has been significant.

From March 2020, **our offices were closed to all but critically essential work.** We supported staff in remote working from home, together with adaptations to new systems and ways of working, including online meetings. Whilst Lyndon Visitor

Centre and the Volunteer Training Centre at Rutland Water Nature Reserve reopened with COVID-secure guidelines, The Old Mill in Leicester was not able to return to previous levels of office working.

Unfortunately, lockdown led to a significant impact on our conservation ambitions, as **volunteer activities were suspended at times** and some staff were furloughed due to the decrease in work possible during national lockdowns. Volunteers were only allowed to work following Government guidance. When active, groups were monitored and numbers managed, and we constantly adapted to changing guidance and local conditions.

Bird hides and visitor centres were initially closed, reopening in line with Government guidance. Whilst it was clear that people were craving time in nature, the easing of lockdown brought an influx of visitor numbers, leading to some antisocial behaviour across some of our reserves, especially at Rutland Water.

Membership initially dropped with the first national lockdown. This is partly due to individual financial consequences of the pandemic, but also recruitment dropped with the suspension of face-to-face engagement. New initiatives to increase online membership recruitment, along with the restart of limited face-to-face recruitment improved membership numbers in the second half of the year, and we were happy to finish the year around 1% up.

As it became clear that we could not hold **Birdfair** as planned in August, Trustees wholeheartedly supported the Birdfair team's suggestion to pioneer a virtual event. Virtual Birdfair was held successfully online and involved events, talks, and debates, together with varied exhibitors and sponsors.

Safeguarding Wild Places

Our Nature Reserves

35
nature
reserves

1,250
hectares
(3,087 acres)

1
Special
Protection
Area

19
Sites of
Special
Scientific
Interest

2
National
Nature
Reserves

For the first time in 22 years,
a nightingale sang in Leicestershire
at Cossington Meadows.

Our nature reserves provide protection for an amazing diversity of wildlife, some rare and threatened. They give people from across the city of Leicester, our towns and villages the opportunity to experience, enjoy and learn about nature, and inspire them to save it.

In May 2020, we completed the acquisition of an extension to Holwell Nature Reserves totalling 16ha (39.5 acres) thanks to the generous support of an anonymous donor. This extension almost doubles the size of the Holwell reserves. With the right management and planting, we hope to see this area become rich in biodiversity over the coming years. Along with Cribb's Meadow and Ketton Quarry, the Holwell reserves saw ongoing removal of scrub and rank vegetation to protect and enhance the wildflower-rich grassland.

At Rutland Water Nature Reserve, work was undertaken reprofiling islands on Lagoons 4 and 8, replacing a tern raft, creating five further shelduck boxes, and bracken management at Hambleton Wood. Four new Dexter cows joined our conservation grazing team, and access and infrastructure was improved.

Charnwood Lodge saw exciting trials to restore scarce open heath grassland habitat. Whilst a bracken control experiment with horses and logs was unsuccessful, a new pig enclosure experiment has started well and will be monitored in the future. Cossington Meadows saw considerable management works with ongoing screening of scrapes, viewing areas and implementing grazing regimes. Rides were mown at Launde Wood, Prior's Coppice and Great Merrible Wood, and we carried out clearance work at Tilton

Cutting to reveal the geological faces, as well as improving access by repairing the boardwalks.



Lyndon Visitor Centre

The Lyndon Visitor Centre is the gateway to the Rutland Osprey Project. This year, it underwent a full refurbishment, with the shop offering locally produced gifts and refreshments along with eco-products that echo our vision of environmental sustainability. We worked with Leicester-based arts group Graffwerk to update the centre, making it more interactive and engaging for visitors. Graffwerk created custom wildlife murals depicting some of the species that can be found at Rutland Water Nature Reserve. We also installed new interpretation panels and updated the layout of the centre. You might spot a mural of a cheeky water vole, a spectacular barn owl or our larger-than-life otter in Teal hide. New interpretation panels provide visitors with information about ospreys and other wildlife, and you can watch the osprey webcam live from the centre.

The Lyndon Visitor Centre interpretation upgrade was completed with help from a grant from Auegan Landfill Tax Community Fund.



Safeguarding Wild Places



Living Landscapes



Our Living Landscapes restore, recreate and reconnect fragmented habitats to create an environment full of wildlife and rich in opportunities for learning, health and wellbeing.

Across the Charnwood Forest Living Landscape, a wide range of habitat and species surveys were carried out, involving working closely with local landowners and managers.

We offer tailored advice to encourage and support wildlife-friendly land management, and the project's small grant scheme was used to fund key wildlife enhancement projects.

The Soar and Wreake Living Landscape saw further development of the Natural Flood Management partnership at Narborough Bog. This project is now the subject of a video by the multinational Atkins engineering and design company, as part of a national conference on flood management. It has also been included in the international reference book *Engineering with Nature*, published by the US Army Corps of Engineers.

In the Leighfield Forest Living Landscape, we have been working closely with the Allerton Project at Loddington to enhance the wildlife value of the local area. Local Wildlife Sites were surveyed as part of Living Landscapes.



We are proud to be part of the five-year Charnwood Forest Landscape Partnership Scheme.

Recording and monitoring species is a core part of our work, and we were delighted that the annual Recorders' Conference was successfully held online in 2021. Work continued on data entry, ORCA database data sharing, and we are working more closely with NatureSpot.

We continued our ongoing programme of monitoring and bird recording at Rutland Water Nature Reserve, including Wetland Bird Surveys (WeBS) from July 2020 onwards, with 99,784 individual birds counted.

Rutland Water is regularly in the top five sites in the UK for tufted duck numbers. Constant Effort Site (CES) bird ringing continued at two sites, starting later in the season due to COVID-19 restrictions.



Charnwood Forest Landscape Partnership Scheme

In 2020, Charnwood Forest Regional Park in Leicestershire was awarded a National Lottery Heritage Fund grant worth over £2.7million to protect and enhance this internationally important area for wildlife and geology.

The Charnwood Forest Landscape Partnership Scheme is hosted by the National Forest Company. One of our Living Landscapes areas, we have been improving this area for wildlife and people for over a decade, thanks to support from Aggregate Industries.

The five-year project will promote awareness and understanding of the importance of Charnwood Forest through geological conservation, habitat restoration, improvements to connections between sites for visitors, creating innovative interpretation, outdoor learning opportunities for young people and adults, and a programme of cultural and heritage activities and events.

LRWT will be leading projects including managing species-rich grasslands and improving connectivity of the meadows, increasing public knowledge of the wildlife in the area and encouraging people to record it. This will range from training and support to enabling people to take part in long-term monitoring schemes. Surveys involving spider experts will help us determine which species are present at key sites.

Safeguarding Wild Places

Protecting local wildlife

ADDER © TONY CLARKE.

Ketton Quarry is an amazing site for reptiles, including adders.

A
nightingale
sang at
Cossington
Meadows

19
osprey chicks
ringed

36
avocet chicks
born at Rutland
Water Nature
Reserve

Our Nature Reserves, Living Landscapes and projects directly help vulnerable species to survive and thrive, restoring wildlife and making space for nature.

Although Lyndon Visitor Centre had to close many times due to COVID-19, 2020 was the first season we extended opening beyond the osprey season, receiving 10,657 visitors. 37 events were held under COVID-secure guidelines with 342 attendees. Before the first national lockdown, we held eight events and 30 primary schools were visited. Adapting brilliantly to the restrictions, our Osprey Education team produced 20 weeks of online content. Nineteen osprey chicks were ringed at both Manton Bay and off-site nesting locations, and we worked with eighteen landowners to accommodate osprey nests on their land.

As well as the positive value of nature in people's lives during the lockdowns, there were some benefits brought about by low visitor numbers to our reserves in early 2020. This included the first record of a singing nightingale at Cossington Meadows (the first in Leicestershire for 22 years!) and stonechats moving into new areas.

We continued biological recording on our nature reserves and other sites, with bat monitoring an ongoing focus. We are building the evidence base for bat roosting locations, plus the abundance and diversity of bats using woodland nature reserves in east Leicestershire and Rutland. Monitoring work included checking existing bat boxes, erecting new boxes, setting up passive bat detectors in various locations and analysing the recordings. This work successfully confirmed the presence of the rare barbastelle on two further nature reserves.



Super Species at Rutland Water

Winter 2020 saw extensive landscaping work on Lagoon 4 at Rutland Water Nature Reserve, with bulldozers reprofiling the islands. In just a few months we have been able to see the benefits of the work, with avocets in particular liking the improvements.

In 2019, there was just one recorded successful breeding pair of avocets at Rutland Water Nature Reserve. In contrast, spring 2021 has seen an incredible ten pairs successfully breeding, with 36 chicks hatching. Redshank, lapwing, little ringed plover and oystercatcher have all benefited, too. We are indebted to our survey volunteers who carried out weekly recording over three months from April to July. It is as a direct result of their work that we are aware of the breeding success.

Further afield, in the Cherry Woods area of Rutland Water Nature Reserve, a rare fungus was discovered. *Psathyrella typhae* is a species associated with the decaying material of bulrushes. There are only seven records with National Biodiversity Network and just twelve records in the Kew database. A specimen was sent to Kew Gardens for inclusion in their fungarium, a reference collection of fungi containing 1.25 million dried specimens from around the world (375,000 from the UK).



Inspiring People

Education



30
online
resources
created

1,000
people signed
up to Go Wild
at Home

855
children
engaged through
Wild Forest
School

8
Grow Wild
spaces
completed

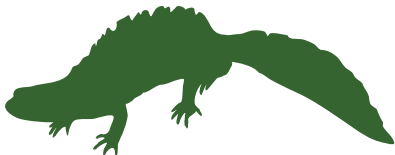
With the support from players of People's Postcode Lottery, our Wild Forest School reaches children across Leicester.

Throughout the year, staff adapted to difficult conditions, creating excellent online resources and moving groups online. Despite the challenges, working with young people in creative ways to bring them closer to nature is a core priority.

Wild Forest School continues to be the focus for our Outreach Education Programme, helping children to develop their confidence and self-esteem through hands-on learning entirely outdoors. Funding from players of People's Postcode Lottery enabled further development of the project, giving children the chance to explore and experience the natural world through a range of different Forest School activities. We worked with six groups of children from Leicester primary schools, ran four Wild Tots pre-school groups and organised sessions with seven different groups of home-educated children. Significant work was delivered online this year and we created 'how to' short films.

Our Grow Wild gardeners had a busy year with their activities continuing safely throughout the pandemic, helping local schools and community groups make the most of their outdoor spaces through numerous projects. Eight projects were completed. We launched the "Green Influencers" two-year project for Leicester with support from the Ernest Cook Trust, with young people across Leicester co-designing projects and creative solutions to environmental issues.

Wildlife Watch activities changed substantially because of COVID-19. Most of the face-to-face meetings were moved online. Throughout the year two COVID-secure meetings and ten online sessions were held, as well as an online Wildlife Watch leader workshop.



Go Wild at Home

We recognised early in the pandemic how important connecting with nature was going to be, not only for members and supporters, but for many people living in our counties and beyond. Maintaining a connection with the natural world was more important than ever for health and wellbeing.

To help people stay active and wild, we put together activities and resources to inspire families and individuals to enjoy nature in their local area. Staff developed online and digital content as a substitute for face-to-face activities. Our weekly family 'Go Wild' email covered fourteen weeks during the first national lockdown, with over 1,000 families signing up.

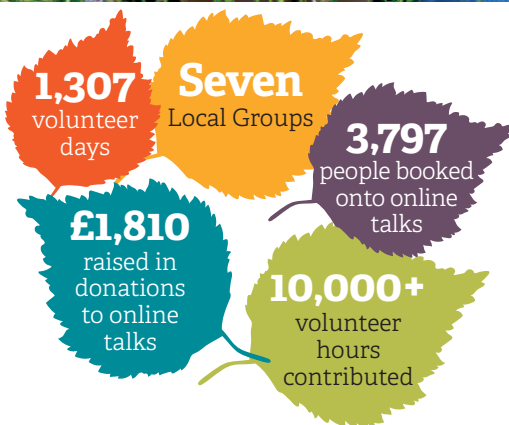
Online content was also created for our YouTube channel as part of Wild Forest School, thanks to players of People's Postcode Lottery. We created videos with arts and crafts, nature activities, treasure hunts, rain painting and more, being viewed over 19,000 times across YouTube and Facebook. We encouraged children to complete eight 'Go Wild at Home' activities to earn their Wildlife Watch Hedgehog Award, too. Our wild quizzes were popular, and we encouraged people to explore their local nature reserves and take action for nature in their gardens.



Inspiring People



Volunteers & Local Groups



We recognise the valuable role that volunteering plays in people's health and wellbeing, as well as the huge benefits for local nature conservation.

We are very grateful for the hard work, commitment and dedication of all our volunteers, who provide vital support by

undertaking a wide range of tasks across all areas of the Trust's activities and initiatives. Their skills and knowledge underpin our achievements and progress.

Even with restrictions on COVID-19, there were still 841 days or 5,616 hours delivered across Leicestershire over the year. Government COVID restrictions and guidance limited our operations, in particular volunteering during some of the national lockdowns. Volunteering was restricted to "Essential and Critical" things such as livestock monitoring.

Nonetheless, LRWT's roving conservation volunteer group completed 89 task days of practical management work across our nature reserves, contributing a large number of volunteer hours to our conservation effort. Volunteering also



Our volunteers carry out a range of tasks, like wildlife recording, habitat management, livestock monitoring and education work.

delivered 55 hours for our education work, 55 hours with the North West nature reserves group, 981 hours with Charnwood nature reserves group, and 330 hours with the Limestone nature reserves group.

The volunteer team at Rutland Water delivered a further 466 volunteer days and provided support in all areas of the day-to-day management of the nature reserve, including habitat management, wildlife recording, running of Lyndon Visitor Centre and the Rutland Osprey Project.

We hosted three long-term placements in our Volunteer Trainee Reserve Officer scheme over the year, allowing three individuals to gain the skills and experience needed to work in the nature conservation sector, whilst providing a valuable contribution to our work.

Online talks by Local Groups

One of our greatest strengths is our network of Local Groups, who represent us in their communities. COVID-19 and national lockdowns may have limited our face-to-face events programme, but our Local Groups rose to the challenge and worked with staff to develop an exciting range of online talks. Our Local Groups along with the Leicestershire & Rutland Badger Group (affiliated) delivered 22 online talks covering a range of nature topics between September 2020 and April 2021.

3,797 people booked on to the talks, and they were viewed a further 4,000 times on YouTube, with the most popular being a talk by Dr Tim Mackrill on the reintroduction of the white-tailed eagle to the Isle of Wight. To support the running costs of these talks, we asked for voluntary donations and were delighted to raise £1,810.



Our Local Groups

- * Charnwood Group
- * Great Bowden Group
- * Humberstone Group
- * Oadby & Wigston Group
- * Melton Mowbray Group
- * North West Group
- * Rutland Group

Inspiring People



Campaigns, engagement & advocacy

1,500+
households
taking part
in 30 Days Wild

1,500
people
campaigning
to stop the
badger cull

25,800
people visited
Virtual
Birdfair

15,520
followers
on social
media

We are committed to extending our reach into local communities, engaging people from all backgrounds and of all ages in championing wildlife and wildlife places. Our communications, campaigns and advocacy are central to our work.

In August 2020, we joined four Wildlife Trusts in opposing proposed new badger cull zones,

including in Leicestershire. Over 1,500 local people signed the petition, but sadly we were unsuccessful in preventing the allocation of a licence to cull badgers in the area. We supported UK-wide campaigns across The Wildlife Trusts including National Marine Week, Wild About Gardens, Action for Insects and the 30x30 campaign. We celebrated our highest participation in 30 Days Wild, with 1,528 households, schools, businesses and care homes taking part.

The launch of an Osprey Nest-cam Appeal in July 2020 raised £16,000, with the camera installed for the 2021 season. At the end of 2020, we launched our Meadows Appeal to secure two threatened wildflower meadows. Whilst our bid in the Vale of Belvoir was unsuccessful, by April 2021 we had raised nearly £113,000 (totalling £115,727.70 by the end of the appeal), completing the Charnwood Forest Meadow



We were part of a national campaign to raise awareness of the decline of insect populations. Thanks to everyone who took Action for Insects!

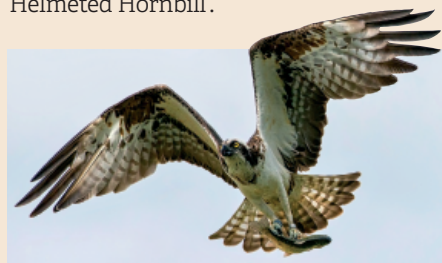
purchase later in 2021.

Our reach has continued to grow with sophisticated membership communications across email newsletters and our Wild Leicestershire and Rutland magazine, and with our website and social media building a broader supporter base. Our social media followers grow every year, with Facebook, Instagram and Twitter having over 15,000 followers in total.

We responded to a variety of consultations including the Leicester City Draft Local Plan, tree work at Oakham, North West Leicestershire Local Plan Sustainability Appraisal, housing development, comments on Bardon Quarry BAP, Soar Valley Gravel Quarry, and Greetham Quarry. The ongoing work with Parish Councils led to three rounds of three one-hour 'Biodiversity Duty' training sessions, provided on behalf of Leicestershire County Council for 35 attending parishes.

Virtual Birdfair

Birdfair is the biggest event of its kind in the world, showcasing birdwatching and wildlife organisations and companies, as well as raising vital funds for global nature conservation programmes. In the absence of a live event in August 2020, we developed the Virtual Birdfair, involving online events, talks, and debates, together with varied exhibitors and sponsors, with the event being pulled together in just eight weeks. The Virtual Birdfair website hosted more than 130 exhibitors, 43 artists, 17 sponsors and partner organisations, 130 recorded events and lectures, 24 authors talks and 20 live events. 25,800 unique users visited during the festival week (rising to 96,000 over autumn), viewing pages 210,199 times. The State of Nature debate event with Jane Goodall and Chris Packham drew over 400 people live and over 2,000 views over the weekend, whilst the most popular recorded event was our film premiere "The Last Song of the Nightingale", with over 800 viewings over the Birdfair weekend. A sum of £15,005 was raised to support the BirdLife International project 'Saving the Helmeted Hornbill'.



Working in partnership

We recognise that we must work with a range of partners and stakeholders if we want to see 30% of land dedicated to nature by 2030. These include estate owners, golf courses, landowners, businesses, NGOs, government bodies, local authorities and funders.

Grants and trusts

People's Postcode Lottery
Ernest Cook Trust
Grantscape / Augean
National Lottery Heritage Fund
David Cock Foundation
The Rutland Trust

Companies

Anglian Water
Aggregate Industries
Jordans Cereals
Vine House Farm
Hansons Cement
Redrow Homes East
Midlands
Amazon Smile
Carl Zeiss Limited
Swarovski
Rutland Belle

Corporate members

Melton Mowbray Building Society
Morgan Sindall
Rutland Online
Which Way Financial Solutions
Edwards & Edwards Consultancy
Eco Ski

Community groups & other organisations

Friends of Charnwood Forest
Leicestershire and Rutland Bat Group
Leicestershire and Rutland Badger Group
Leicestershire and Rutland Swift Partnership
Rutland Natural History Society
University of Leicester NatureSpot
Environment Agency
Trent Rivers Trust
National Forest Company
Natural England
Welland Valley Rivers Trust
Royal Society of Wildlife Trusts
Butterfly Conservation East Midlands

Game & Wildlife Conservation Trust
The Green Place
DEFRA
Charnwood Forest Regional Park Landscape Partnership Scheme
Age UK
Admiral Nurses
Dementia Adventure

Local authorities

Leicestershire County Council
Leicester City Council
Rutland County Council
Hinckley and Bosworth Borough Council
Blaby District Council
Charnwood Borough Council

Virtual Birdfair Sponsors

RSPB
Canon UK
Swarovski Optik
Naturetrek
Nikon
Zeiss
Viking Optical
Leica
Bloomsbury
Princeton University Press
Wild Sounds and Books

Our Governance

Leicestershire and Rutland Wildlife Trust is managed by a Council of Trustees (elected from its members) who oversee governance and strategic direction. You can find out more about them, their skills and expertise on our website.

Trustees

Chairman - Andrew Cotton (to Nov 2020)
Chairman - Tony Clarke (Nov 2020 - Aug 2021)
Chairman - Anthony Biddle (from Aug 2021)
Hon. Secretary – Maggie Morland
Hon. Treasurer – Ann Tomlinson
Trustee - Bob Bearne
Trustee - John Bleby
Trustee - Linda Jones
Trustee - Andrew Moffat
Trustee - Ray Morris
Trustee - Ian Selmes
Trustee - Helen Nott
Trustee - Peter Williams

Patrons

Sir David Attenborough, OM, CH, CVO, CBE, FRS
Lady Gretton DCVO, JP
Sir Lawrence Howard KVCVO, OBE

Vice Presidents

Hugh Dixon FCA (Deceased June 2021)
Peter Ward MA, LLB

We were sad to hear of the passing of Hugh Dixon on 4th June 2021 following a short illness. Hugh made a very significant contribution to Leicestershire and Rutland Wildlife Trust over many years, playing a pivotal role in the formation and early years of LRWT, and was instrumental in securing key achievements and successes. Hugh was Honorary Treasurer for over thirty years, became Chairman in the late 1990s and was a strong advocate of reserve acquisition, being involved in securing Launde Woods, fields adjoining Wymeswold Meadows, Loughborough Big Meadow, Cossington Meadows and others. He saw the start of our involvement at Rutland Water, chairing the Rutland Water Nature Reserve steering committee for many years.

Our Staff

CEO

Tim Graham

Head of Engagement

Jamie Perry (from February 2021)

Head of Conservation

John Clarkson

Leicester Office

Finance ICT & Office Manager

Georgina Boonham

Finance Officer

Jeein Hong

Accounts and Reporting Officer

Praveen Nair (from October 2020)

Finance Assistant

Sarah Box (to November 2020)

Membership Officer

Josephine Taylor

Membership Assistant

Julie Burnside

Membership Assistant

Helen Ball (from November 2020)

Senior Engagement Officer

Harriet Hickin

Communications & Engagement Assistant

Jordan Linthwaite (from September 2020)

HR Officer

Azrin Alimahomed

Senior Conservation Officers

Claire Install

Neil Pilcher

Conservation Officers

John Bristow

Nathalie Cossa

Chris Hill

Andy Lear

Andy Neilson

Uta Hamzaoui

Claire Sambridge (from January 2021)

Ben Devine (to September 2020)

Trainee Reserve Officers

Helena Bollingbroke

Emily MacAllister (from September 2020)

Anna Leschinski (from September 2020)

Ben Jacklin (to August 2020)

Jonathan Burt (August – October 2020)

Senior Education Officer

Martha Rose

Education Officers

Rachel Ibbotson

Fiona Worton (from August 2020)

Green Mentor & Youth Assistant*

Hannah Keys (from February 2021)

Rutland Water Nature Reserve

VTC and Events Coordinator

Amelia Woolford

Senior Reserve Officer

Joseph Davis

Visitor Centre and Events Coordinator

Laura Brady

Visitor Centre and Events Assistant

Elizabeth Smith

Reserve Officers

Paul Trevor

Lloyd Park (to September 2020)

Frances Payne

Assistant Reserve Officers

Sarah Bedford (from September 2020)

Matthew Taylor (to August 2020)

Species and Recording Officer

Timothy Sexton (from February 2021)

Rutland Osprey Project Officers

Ken Davies

Jackie Murray (to September 2020)

Pete Murray (to September 2020)

Osprey information Officer

Abigail Mustard

Birdfair

Tim Appleton (to May 2020)

Carole Allen

Nicola Brown

Sarah Marsh

*Green Influencers scheme

Our Finances

Leicestershire And Rutland Wildlife Trust Limited Financial Report

The Statement of Financial Activities (SOFA) for the year ended 31st March 2021 and the Balance Sheet at that date are a summary of information extracted from the Trust's financial statements for the year comprising the twelve months ended 31st March 2021, which include the financial statements of the subsidiary company, Leicestershire Wildlife (Sales) Limited.

The consolidated SOFA shows a net movement in funds for the year of £431,512 surplus (2020: £391,765) and total charity funds of £5,662,774 (2020: £5,231,262). The activities of the subsidiary company contributed a loss for the year of £21,616 (2019: loss of £3,020) which, following the cancellation of the 2020 Birdfair, includes a loss arising from Birdfair operations of £19,147 after donations payable (2020: £168,719 surplus, subsequently donated). A sum of £15,005 was raised via direct donations during Virtual Birdfair to support the BirdLife International project "The Helmeted Hornbill".

The financial year ended 31 March 2021 has been an exceptional one. The finances of the Group have been severely affected by the global COVID-19 pandemic, as highlighted elsewhere in the Annual Review. Examples of this effect are a reduction in expenditure relating to education, outreach, activities, and volunteering of around 40% compared to the prior year, and a similar fall in respect of monitoring and advocacy work for the wider countryside. Retail activity was almost completely wiped out with a 93% drop in retail income.

Despite serious concerns about the impact of COVID-19 on the wider economy and hence on subscriptions from supporters, membership income remained static, with no overall loss of ground by the year-end.

The Trust was fortunate in obtaining COVID-19 resilience funding from the National Lottery Heritage Fund, together with business support grants from Rutland County Council, and the Government's Coronavirus Job Retention Scheme. Without such financial support for our basic operations, the Group position would be showing a significant loss on unrestricted activities.

The overall net movement in funds has benefited from gains arising from the periodic revaluation of investment properties, and the significant recovery in value of the Trust's investment portfolio after earlier COVID-19-related falls.

Despite these adverse conditions, the consolidated Balance Sheet at the year-end continues to show the Group in a strong asset position. In particular, cash balances have been boosted by substantial receipts of legacy income, which have been transferred to the Designated Funds to provide finance for vital development costs over the next two financial years. New and enhanced income streams to replace the financial reserves used in this way will be a high priority during the next financial year.

The auditor issued an unqualified report on the full annual financial statements, and their statement under section 496 of →

Our Finances (continued)

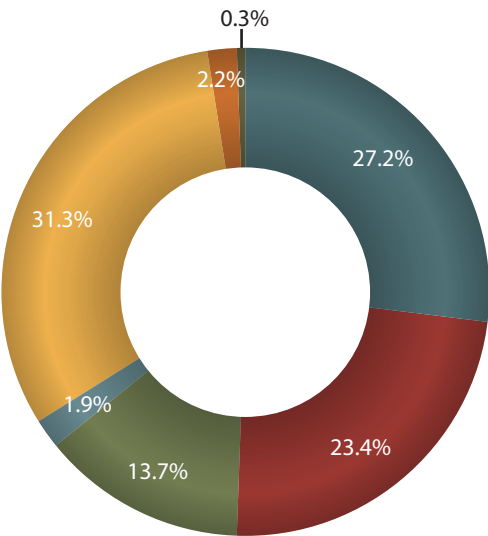
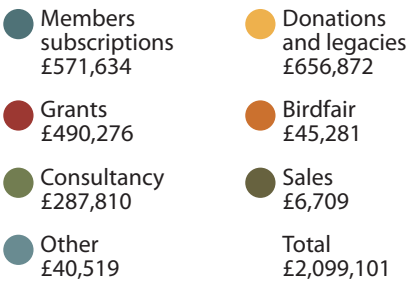
the Companies Act 2006 regarding the consistency of those financial statements with the Annual Report of the Council was also unqualified. The Annual Report of the Council, summarised accounts, and supplementary material presented here are only a part of the full Annual Report and financial statements of the Trust. Copies of these, and those of the subsidiary company,

can be obtained from the Trust office at The Old Mill, 9 Soar Lane, Leicester, LE3 5DE.

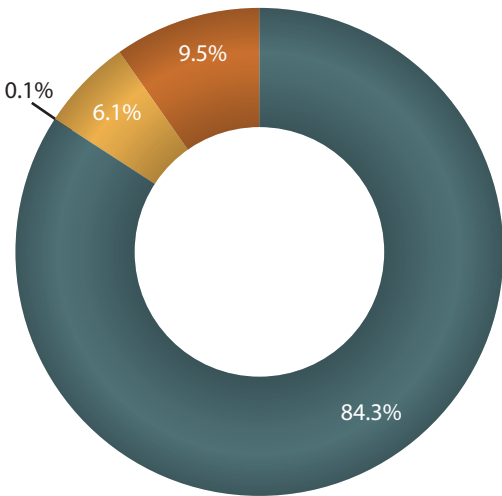
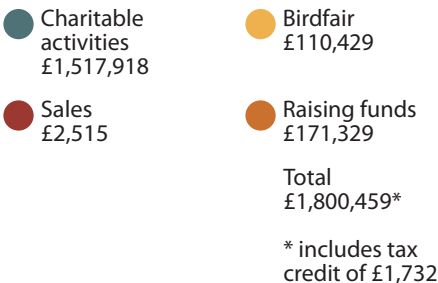
The financial statements of the Trust were approved by the Trust Council on 27 September 2021, and a copy of these financial statements has been filed with the Registrar of Companies and the Charity Commission.

Ann Tomlinson MA FCA
Hon Treasurer

Where our income came from



How it was spent



Statement Of Financial Activities

for the year ended 31st March 2021

	2021 £	2020 £
Income		
Members subscriptions including Gift Aid	571,634	546,475
Donations and legacies	656,872	577,560
Grants	490,276	237,136
Birdfair	45,281	848,684
Rent receivable	33,679	35,347
Shop sales	6,709	91,721
Consultancy fees	287,810	394,268
Investment income and interest	5,433	12,562
Livestock and other income	1,407	5,517
Total income	2,099,101	2,749,270
Expenditure		
Raising funds	171,329	205,421
Expenditure relating to sales	2,515	80,454
Expenditure on Birdfair	110,429	680,520
Charitable activities	1,517,918	1,631,637
Taxation charge	(1,732)	-
Total expenditure	1,800,459	2,598,032
Net gains/(losses) from investments	118,333	(17,239)
Net income	416,975	133,999
Gains/(losses) on revaluation of fixed assets	3,195	(5,850)
Actuarial gains on defined benefit pension scheme	11,342	263,616
Net movement in funds	431,512	391,765

Balance Sheet

as at 31st March 2021

	2021 £	2020 £
Fixed assets		
Tangible assets	1,273,027	1,334,871
Heritage assets	2,177,811	1,932,586
Investments	843,088	721,935
	4,293,926	3,989,392
Current assets		
Stocks	6,732	7,022
Debtors	181,993	190,740
Cash at bank and in hand	1,675,426	1,709,039
	1,864,151	1,906,801
Creditors: amounts falling due within one year	(408,334)	(529,749)
Net current assets	1,455,817	1,377,052
Total assets less current liabilities	5,749,743	5,366,444
Defined benefit pension scheme liability	(86,969)	(135,182)
Total net assets	5,662,774	5,231,262
The funds of the charity		
Unrestricted accumulated charitable fund	269,563	282,088
Designated funds	2,756,214	2,472,717
Restricted charitable funds	2,636,997	2,476,457
Total charity funds	5,662,774	5,231,262

The 65th Annual General Meeting of the Leicestershire and Rutland Wildlife Trust

will be held online on Wednesday 17th November 2021 at 7.00pm.

Please go to lrwt.org.uk/AGM to register your place.

AGM Agenda

- 1) Welcome
- 2) Notice of the meeting
- 3) Minutes of the 64th Annual General Meeting held online on Wednesday 18th November 2020
- 4) Report of the Council 2020-2021
- 5) The Trust Accounts for the year ending 31st March 2021
- 6) Election of new Members to Council* to serve a three-year term. The following individuals have been recommended by Council to be elected as a Trustee:
Silviu Petrovan
Bev Smith
Andrew Thorpe
Abi Wilkin
Matt Youngs
- 7) Re-election of Members to Council* to serve a three-year term. The following member of Council has completed his three-year term of office but has indicated his wish to stand for re-election:
Bob Bearne
- 8) Appointment of RSM UK Audit LLP as Auditors to the Trust
- 9) Questions from members
- 10) Meeting closes

*Biographies available at
lrwt.org.uk/how-we-are-run

If you would like to submit a question for our AGM, please email info@lrwt.org.uk by October 31st, marking the subject AGM.



The meeting will be followed by a webinar presented by our guest speaker Debbie Tann, CEO of Hampshire and Isle of Wight Wildlife Trust (HIWWT). Debbie has a first-

class BSc degree in Environmental Science and MSc with distinction in Conservation from University College London. She began her career in the early 1990s as an ecologist. She has worked in a variety of roles within the Wildlife Trusts, including Head of Conservation and Deputy CEO before becoming Chief Executive at HIWWT in 2008. She has also held roles on a number of national and local boards, committees and advisory groups. She will share an inspiring talk on The Wildlife Trusts' vision for a Wilder Future.

Stay in touch

Email info@lrwt.org.uk

Telephone 0116 262 9968

Address The Old Mill, 9 Soar Lane,
Leicester, LE3 5DE

Website lrwt.org.uk

Registered charity number 210531

Registered company number 561833

facebook.com/leicswildlife

twitter.com/leicswildlife

instagram.com/leiceswildlife

linkedin.com/company/leicswildlife

youtube.com/lrwt56